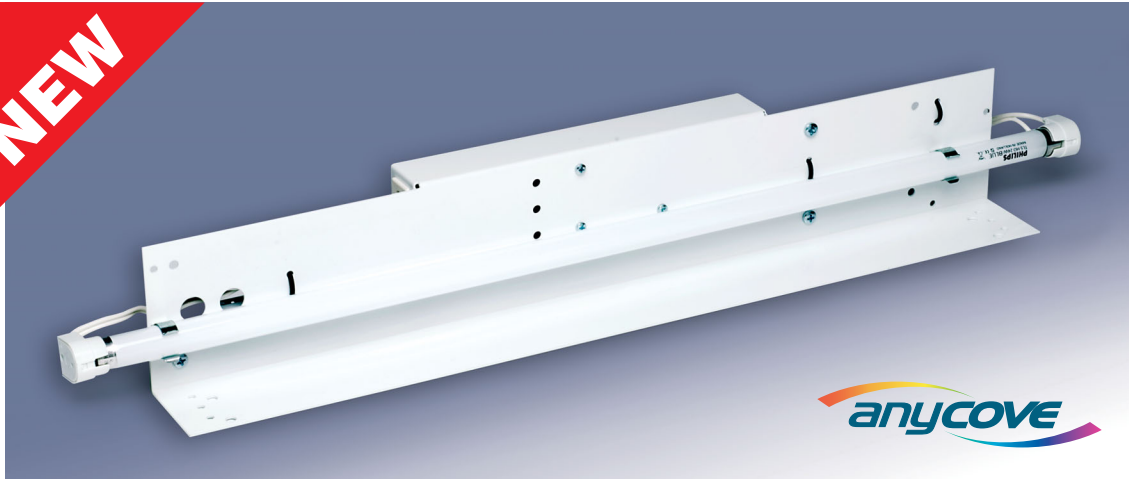


Concealed, Overlapping Lighting System **ANYCOVE**

NEW



Anycove is a modular overlapping hardwired or plug and play system specifically designed for all your cove and concealed lighting applications. It is available in a wide variety of lamp and ballast configurations to suit switching, dimming and colour change requirements.

Anycove can employ a fast plug and play connection system allowing up to 40 units to be run from one power entry.



Rear view

- Quick and simple installation.
- Low energy consumption.
- Low maintenance – easy to replace lamps and to clean fixtures.
- Extremely cost efficient.
- Suitable for entire range of High Efficiency (HE) and High Output (HO) T5 fluorescent lamps.
- T8 fluorescent lamps available to special order.
- Coloured tubes and sleeves available.
- Switchable/dimmable via DMX*, DSI, DALI, 1-10 V or on board dimmer.
- Individually dimmable twin ballast versions available for colour change.
- Mains plug & play connections via Weiland style GST connectors, ST connectors to special order.
- Fast plug and play mains and data connections for single ballast versions.
- Hardwired mains connections for two ballast versions data via plug & play RJ12 system.
- Compatible with other Anycolour products.
- Versions also available for non EU markets.

* Requires additional DMX/DFB interface

Tel: +44 (0)23 9259 9410 Fax: +44 (0)23 9259 8723 e-mail: sales@anytronic.com

TV STUDIOS | THEATRE | SCHOOLS | CINEMA | ENTERTAINMENT | ARCHITECTURAL | OFFICES & RETAIL